

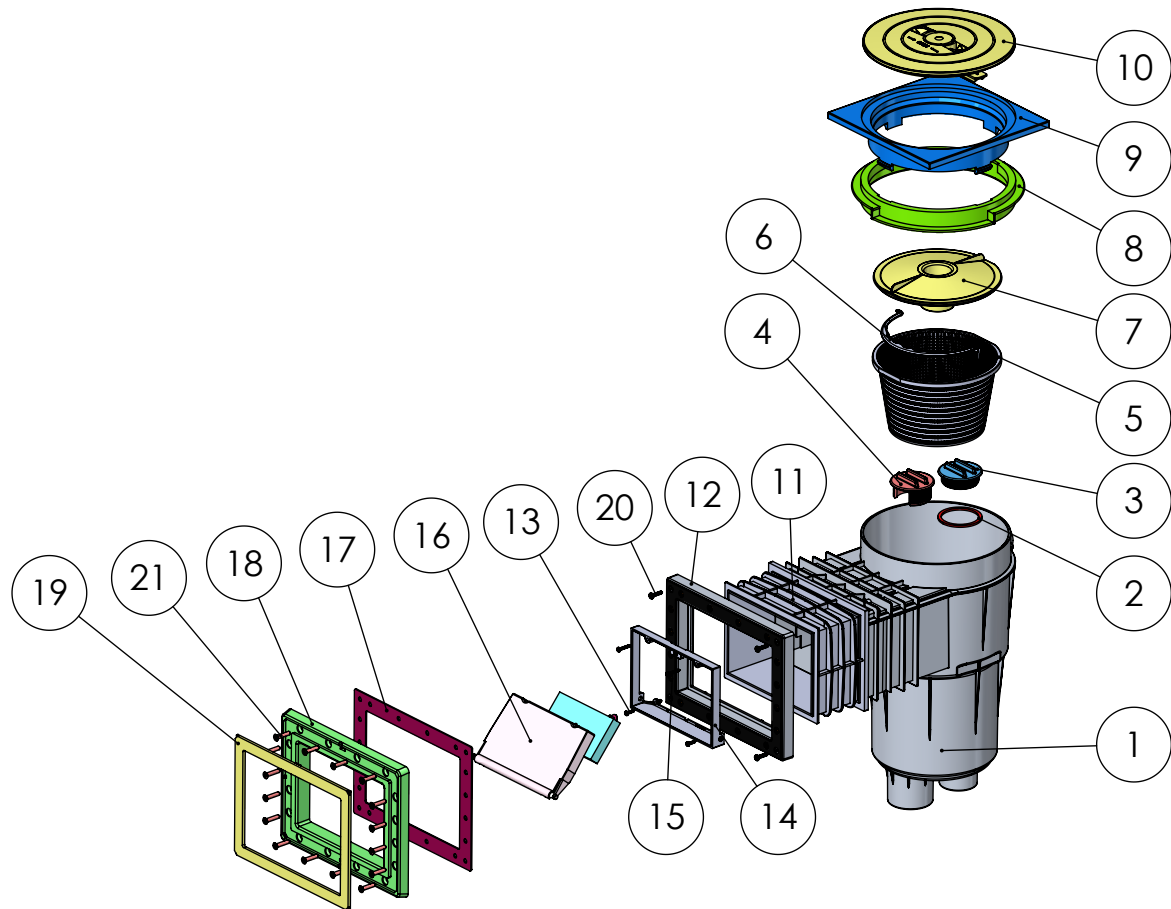
# DESPIECE ASSEMBLY

Rev. 00 MLC  
Año / Year: 2012  
Pág./Page 1 / 1  
ESP / ENG

CÓDIGO / CODE: **(11309 VV 99)**

DESCRIPCIÓN: SKIMMER 17,5L PISC.PREF. BOCA STD/ TAPA CUADRADA+10cms - TORNILLOS 30 mm

DESCRIPTION: SKIMMER 17,5L. WITH STANDARD MOUTH/ SQUARE LID+10cms - 30 mm SCREWS



| NUM. | CODI             | DENOMINACIO                          | DESCRIPTION                        | CANT. |
|------|------------------|--------------------------------------|------------------------------------|-------|
| 1    | 7011906000       | Cos Skimmer 17,5 Lts                 | Skimmer Body 17,5L                 | 1     |
| 2    | 05280-0007       | Junta Plana EPDM 70X60X3             | Gasket 70×60×3                     | 1     |
| 3    | 27868-0001       | TAP 2" BSP llarga de rosca 18mm      | Blanking Plug 2" BSP               | 1     |
| 4    | 05280-0004       | Tap Regulació Skimmer 17,5L          | Regulating Plug                    | 1     |
| 5    | 05280-0401       | Cistell Skimmer 17,5L                | Basket - Skimmer 17.5 L            | 1     |
| 6    | 05280-0402       | Nansa Cistell Skimmer 17,5 Lts       | Handle basket                      | 1     |
| 7    | 05280-0003       | Tapa Cistell Skimmer 17,5 L          | Basket lid - Skimmer 17.5 L        | 1     |
| 8    | 05280-0001       | Anell Distanciador Skimmer 17,5L     | Skimmer collar extension ring      | 1     |
| 9    | 09342            | Marc quadrat skimmer 17,5L           | Square Rim                         | 1     |
| 10   | 05280-0300 BP 00 | Conjunt Tapa Skimmer 17.5 L Anònima  | Skimmer lid assembly               | 1     |
| 11   | 05281-0001       | ALLARGAMENT BOCA SKIMMERS            | Extended Throat Skimmer            | 1     |
| 12   | 01461-0020       | Marc Adaptador BI-Materia 16 Injerts | Adapter with gasket and 16 Inserts | 1     |
| 13   | 7011439016       | Cargol DIN 7981 A2 3.9x16            | Screw DIN 7981 A2 3.9×16           | 2     |
| 14   | 05280-0102       | Marc Comporta Skimmer 17,5 Lts       | Flap Frame                         | 1     |
| 15   | 7011439025       | Cargol DIN 7981 A2 3.9X25            | Screw DIN 7981 A2 3.9×25           | 2     |
| 16   | 05280-0200       | Comporta amb Flotador Skimmer 17,5L  | Skimmer Flap                       | 1     |
| 17   | 01461-0004       | Junta adhesiva boca Standard         | Adhesive Gasket                    | 1     |
| 18   | 01461-0002       | Brida Boca std. Skimmer              | Clamp - Standard mouth             | 1     |
| 19   | 01461-0003       | Tapa brida boca standard             | Clamp lid - Standard mouth         | 1     |
| 20   | 7011448022       | CARGOL DIN 7981 4,8X22               | SCREW DIN 7981 4,8x22              | 4     |
| 21   | 10892-0306       | Cargols DIN 966 A2 M-6x30 A/Punta    | Screw DIN 966 A2 M-6x30            | 16    |